

**Leander Road, Brixton, SW2**

1 bedroom flat for sale

**£435,000**

Share of Freehold

## Property Details

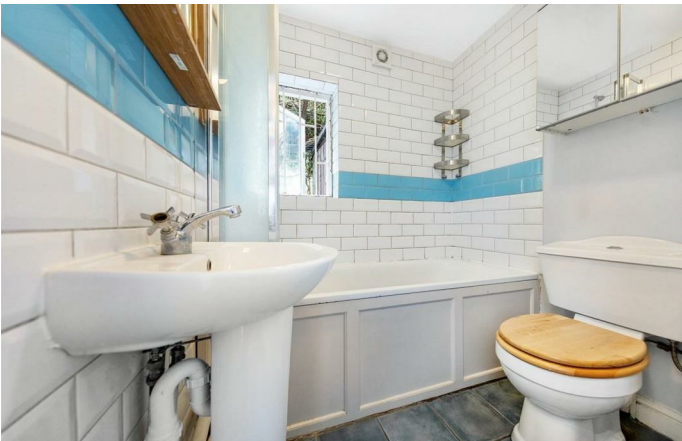
A characterful one double bedroom garden flat, located on a popular residential street in the heart of the Josephine Avenue conservation area. The property is accessed on the ground floor and unlike many similar conversions, the majority of the total square footage is usable living space, as opposed to being distributed within large hallways. The flat comprises a spacious open-plan reception room, a large double bedroom, a modern bathroom and a secluded private garden. Brixton tube station is a ten to twelve-minute walk and the green open spaces of Brockwell Park are a five-minute stroll.

## Features

- Private garden
- Chain free
- Victorian
- Characterful features

Council tax band B      EPC rating D (64)





Leander Road, Brixton, SW2

**K**

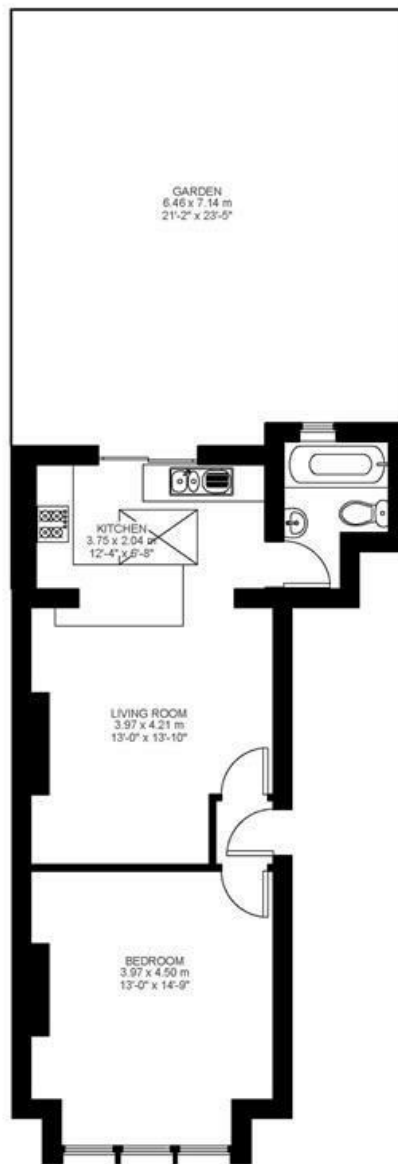
1 Bed flat

Approx internal area:

**511 sqft 47 sqm**

While we do try our very best, floor plans are produced as a guide only and we take no responsibility for the precise accuracy with which any property is represented

Leander Road



Ground Floor





Leander Road, Brixton, SW2

